

Fabric Dépôt



Welcome to Fabric Depot. Being a “Reformed Fabri-holic”, I know what it is like to not be able to find a notion or fabric that my heart desires, but I just know “has to be available”! I’ve spent the last 40+ years, searching out nooks and crannies of suppliers, hoping that I’d be able to use some of my research and “finds” to help others such as myself.

Many of you have small businesses and don’t need massive quantities of an item, but you still need to be able to buy at a discount. **Fabric Dépôt** is the place you’ve been looking for! Our catalog has quantity discounts available listed below the items. If you need samples of any fabrics, please write or call and we will be delighted to send them to you (sample fees include continental US shipping and handling.)

Fabric Dépôt has a well rounded line of lycras, tricots, stretch laces, glistenets, powernets, elastics, notions, bra cups, underwires, patterns and much more. We are constantly seeking sources for items needed in the designing and sewing of swimsuits, lingerie, dance, skating and drill team costumes. So if you don’t see it in our catalog, ask us anyway, we just might have it.

Look for **Fabric Dépôt’s 2019** catalog online at www.FabricDepotCo.com
Or you can email us at Orders@FabricDepotCo.com

Thank you for your continued patronage. We look forward to hearing from you.

Your Sewing Friend and “Family”,

Susan Stacy

Andre



Pepe



Cookie



P.S. We have a lot to be Thankful for in 2019. We have GREAT HOPE, FAITH and LOVE for GOD and the United States of America. We want to Thank our Service Men and Women for the excellent job that they do in keeping us safe. Let’s all do our job in making America Great !

Table of Contents

<p>I. Shimmering Lycra..... Page 3</p> <p>II. Heavy Wt. Lycra..... 4</p> <p>III. Matte Lycra..... 4</p> <p>IV. Stretch Satin Lycra..... 4</p> <p>V. Stretch Velvet Lycra..... 5</p> <p>VI. Exotic Lycras & Prints..... 6</p> <p>VII. Cotton Lycra.....8</p> <p>VIII. Linings.....9</p> <p>IX. Specialty Fabrics.....10</p> <p>X. Powernet Mesh.....11</p> <p>XI. Glistenet..... 12</p> <p>XII. Stretch Allover Lace.....13</p>	<p>XIII. Stretch Lace Trim..... 20</p> <p>XIV. Rashelle Lace Trim..... 27</p> <p>XV. Tricot..... 31</p> <p>XVI. Valu-Packs..... 32</p> <p>XVII. Kits..... 36</p> <p>XVIII. Notions..... 37</p> <p>XIX. Bra Cups..... 45</p> <p>XX. Elastics..... 46</p> <p>XXI. Patterns..... 51</p> <p>XXII. Bra Patterns..... 60</p> <p>XXIII. Books..... 65</p> <p>XXIV. Advertising Media..... 66</p>
------------------------------------------------------------------------------------------------------------------------------------------------------------------------------------------------------------------------------------------------------------------------------------------------------------------------------------------------------------------------------------------------------------------------------------------------------------------------------------------------------------------------	-------------------------------------------------------------------------------------------------------------------------------------------------------------------------------------------------------------------------------------------------------------------------------------------------------------------------------------------------------------------------------------------------------------------------------------------------------------------------------

HOW TO ORDER

Phone Ordering - Call **1-979-758-3100** anytime between 9:00 am to 5 pm CST (Monday through Friday). **If we are unavailable to answer your call, please leave your name and phone number and we will gladly call you back as soon as possible.**

Fax Ordering - Fax to our dedicated fax at **1-979-758-9423** anytime 24 hours a day.

Shipping – We normally ship within 24 hours (Mon. thru Fri.) of receiving your order . **FED-EX** or **UPS Ground** are our normal shipping methods to anywhere in the Continental US. The shipping time is **2 to 5 business days** before you receive your order.

We can also ship your order **UPS BLUE (2 Day Delivery)** or **UPS-RED (1 Day Delivery)**. After placing your order, we will call you back with the amount of UPS Blue or UPS RED charges, which are dependant on the weight and size of your shipment.

Sorry, we no longer do COD Orders.

**** If you are requesting **shipment outside of the Continental US** call, write or e-mail and we will let you know how much shipping charges will be on your order. For **International Orders** we do add an additional \$5.00 fee for filling out customs forms for USPS. (The price of Sample Sets include the cost of mailing anywhere in the continental US.)

Shipping & Handling Chart (charges are approx.)	
Order Total	Shipping Charge
\$1.00 to \$19.99	\$19.00
\$20.00 to \$39.99	\$22.00
\$40.00 to \$59.99	\$23.00
\$60.00 to \$79.99	\$24.00
\$80.00 to \$100.00	\$25.00
Above \$100.00	See Example

For each \$100.00, include \$25.00 for shipping plus the remaining amount based on the chart to the left.

*****Shipping charges are a "rule of thumb" approximation and may be less.**

Example: You are buying \$235.00 of merchandise:

Merchandise	Shipping (UPS Ground)
\$100.00	\$25.00
\$100.00	\$25.00
35.00	22.00

Sub-Total \$235.00 plus shipping \$72.00

Your merchandise total with shipping charges will be \$307.00.

Terms- We accept **American Express, MasterCard, VISA and Discovery Card.** (International Orders please use credit cards only.)

Sales Tax- **Texas residents must pay 7.25% Sales Tax,** unless you send a copy of a valid Sales and Use Tax Permit.

Returns and Exchanges- Generally speaking since most fabrics and elastics are cut to order, all sales are final in that area. However, we will replace goods that are damaged in transit. If you encounter any problems, please call us to get the situation resolved.

Special Orders- There is a 50% Non-refundable deposit on all Special Orders.

Disclaimer- We try not to make mistakes on our pricing or information in this catalog. However, if an error occurs, please accept our apologies and corrections. **THANKS**

Please note— Prices are subject to change without notice. (We will not accept liability for the use or misuse of any product sold or distributed by Fabric Depot.)

LYCRAS IN SOLID COLORS

“SHIMMERING” LYCRA” (5.5 oz.) 57” to 60” wide \$14.00 yd. (1 yd. minimum)
 This medium weight nylon lycra with a little sheen on one side and a matte finish on the back side is ideal for swimsuits, dance or skating costumes, activewear, bras and “light-control” foundation garments. Most colors are 4 way stretch.

Style #	Color (1 yd. min.)	Style #	Color(1 yd. min)	Style #	Color(1 yd. min)
FL100BK	Black	FL100SF	SunflowerYellow	FL100MEP III	Melon Punch III
FL100WH	White	FL100PIB	Pink Ballerina II	FL100MB	Marine Blue
FL100IV	Ivory	FL100BLM	Blue Mist II	FL100LTU	Light Turquoise
FL100RR	Real Red	FL100BB II	Baby Blue II	FL100TUS	Turquoise Sizzle II
FL100TE	Teal	FL100LCB	Lt.ColumbiaBlue	FL100DTU	Deep Turquoise
FL100RT II	Royal Teal II	FL100PEB	Periwinkle Blue	FL100FU II	Fuschia II
FL100EMI	Emerald Isle	FL100DL	Dark Lilac	FL100DF II	Dark Fuschia II
FL100AQD	Aqua Dawn	FL100NU II	Nude II	FL100BV	Bright Violet
FL100REC	Red Crimson	FL100TAN	Tan	FL100PF	Pink Flash
FL100GO II	Gold II	FL100SAP	Sapphire Blue	FL100HG II	HunterGreen II
FL100BG	Bright Gold	FL100BC	Blue Cerulian	FL100VI	Violet
FL100SI II	Silver II	FL100RB II	Royal Blue II	FL100LA	Lavender
FL100CGR	Charcoal Grey <small>Sold Out</small>	FL100COL	Columbia Blue	FL100LAS	Lavender Spray
FL100RS	Red Scarlet <small>Sold Out</small>	FL100MIZ	Mint Zest	FL100PUP II	Purple Pizzaz II
FL100BA	Burgandy Abyss	FL100GX	Green Xmas	FL100PM	Purple Magic
FL100NY II	Neon Yellow II	FL100AZB II	Azure Blue II	FL100RAR III	Raspberry Rush III
FL100NP	Neon Pink II	FL100NA	Navy	FL100RA III	Raspberry III
FL100HP	Hot Pink	FL100DN	Dark Navy	FL100PIP	Pink Passion
FL100CH II	Chartreuse II	FL100WI	Wine	FL100COPP	Copper
FL100BR	Brown	FL100RP	Red Poppy	FL100 OC	Orange Crush
FL100YEB	Yellow Buttercup	FL100PBR	Peanut Brittle	FL100BOR	Bright Orange
FL100YE	Yellow	FL100LL	Luscious Lilac	FL100NG	Neon Green
				FL100PR	Purple Rain

Discount Price- 10 yards or more of a color is \$11.20 per yard.



Shimmering Lycra Sample Set - \$2.00 Sample Set contains all of the colors available at the time of cutting.

“MATTE” LYCRA

57/60” wide \$14.00 yd.

This medium weight 5 to 5.5 oz. nylon lycra has a matte finish and can be used for dance or skating costumes, swimwear, activewear and lingerie.



Style #	Color (1 yd.min.)	Style #	Color (1 yd.min.)
FL110WH	White	FL110MO	Mango Orange
FL110BK	Black	FL110BR	Brown
FL110BN	Bright Navy	FL110CORO	Coral Rose
FL110ARO	Antique Rose	FL110MAR II	Maroon II
FL110BB	Baby Blue	FL110 OIC	Orange Ice
FL110DRE	Dark Red	FL100BG	Bubblegum
FL110KHA	Khaki	FL100TA	Tangerine
FL110COL	Columbia Blue	FL100AQ	Aqua
FL110RRO	Red Rose	FL100TU	Turquoise
FL110DDB	Dk. Dusty Blue	Discount Price -10 yards or more of one color is \$11.20 per yd.	

“STRETCH SATIN” LYCRA (Medium Wt.)

45” to 60” wide \$13.00 yd.
The luxurious feel of satin in a lycra with “1 way” stretch! (1 yd. Min)

Style #	Color
FL400BK	Black
FL400WH	White

Stretch Satin Lycra Sample Set is \$1.00

Discount Price-10 yards or more of one color is \$10.40 a yard.

Heavy Weight Lycra

9.5 to 10.5 oz. 57” wide \$26.00 yd.
For biking or skating pants, Equestrian Riding Jackets, vests, pageant gowns and drill team costumes.

Style #	Color (1 yd. Min.)	Style #	Color (1 yd. Min.)
FL200RE	Red II	FL200LG	Light Gold
FL200RB	Royal Blue	FL200DBU	Dark Burgandy
FL200BS	Blue Sky	FL200MAR	Maroon II
FL200KG	Kelly Green	FL200NA	Navy
FL200SG II	Sunflower Gold II	FL200DHG	Dk.HunterGreen
FL200TE	Teal	FL200BRO	Brown
FL200FU	Fuschia	FL200GO	Gold
FL200PU	Purple	Discount Price - 10 yards or more of one color	
FL200BK	Black	Heavy Weight Lycra Sample Set is \$2.00 .	
FL200WH	White		
FL200LS	Light Silver		
FL200FG	Forest Green		

“Patent Leather” LYCRA

#FL370

55” wide \$22.00 yd
Heavy Black vinyl coated lycra. Great for boot covers for skaters.



Discount Price-10 yards or more is \$17.60 a yard.



“SMOOTH STRETCH VELVET” LYCRA 57” to 60” width \$22.00 yd. (1 yd. Minimum)
Rich smooth velvet lycra is excellent for skating and dance costumes – 4 Way Stretch

Style #	Color	Style #	Color	Style #	Color
FV100IV	Ivory	FV100LAS	Lavender Spray	FV100LA	Lavender
FV100BK	Black	FV100LAB	Lavender Blush	FV100WI	Wine
FV100LB	Light Blue	FV100AM	Amethyst	FV100PUPA	Purple Passion
FV100BSK	Blue Sky	FV100PI	Pink	FV100BRB	Brt. Royal Blue II
FV100LARK	Larkspur	FV100HP	Hotsy Pink	FV100FG	Forest Green
FV100MEL	Melon	FV100COP	Coral Passion	FV100WB	Wisteria Bliss
FV100DR	Dark Red	FV100REX	Rose Exotica	FV100BR	Brown
FV100AQI	Aqua Ice II	FV100DUR	Dusty Rose	FV100BUR	Burgandy
FV100AQ	Aqua	FV100GOD	Golden Dawn	FV100PR	Purple Royale
FV100DTU	Deep Turquoise	FV100HG	HunterGreen	FV100RB	Royal Blue
FV100TEW	Teal Waters	FV100OL	Olive Green		

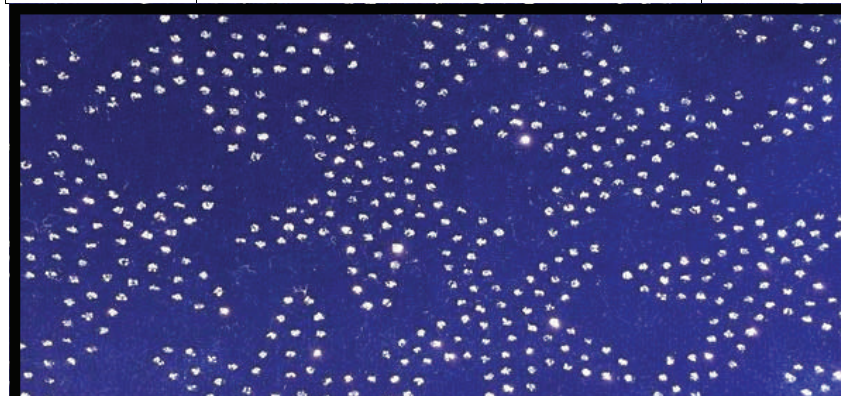
Smooth Velvet Lycra Sample Set is \$2.00.



Discount Price-10 yards or more of a color is \$17.60 a yard.

Fancy Glitter Velvet Lycra
Glitter designs on velvet lycra.

Style #	Description/Color (1 yd. Min.)	Price
FEV704SRB	Silver Vines on Royal Blue Velvet	\$22.00 yd.
FEV604RBSS	Silver Stars on Royal Blue Velvet (pictured)	\$22.00 yd.



Discount Price-20% Off of 10 yards of a design.
Fancy Glitter Velvet Lycra Sample Set-\$2.00

GlitterMist Velvet Lycra
\$20.00 yd. 57/60” wide

Very fine Silver Glitter misted on the surface of the velvet.

Style #	Color (1 yd. Minimum)
FV105WH	White
FV105TE	Teal
FV105ME	Melon
FV105HP	Hot Pink
FV105LI	Lime

Discount Price-10 yards or more of a color is \$16.00 yd.

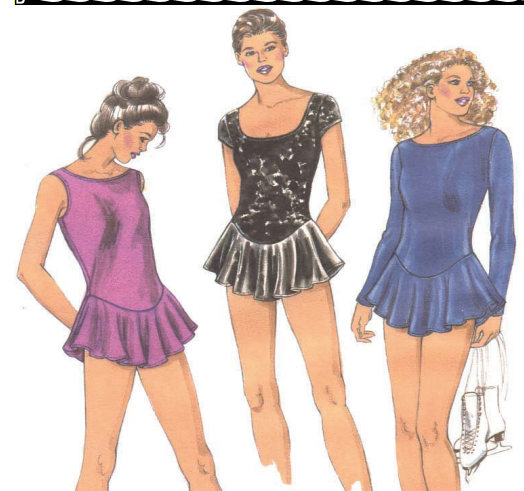
GLITTERMIST Velvet Sample Set-\$2.00.

VELVET “Burn-Out” Lycra

Brilliant Velvet designs with “burn-out” in sheer lycra.

Style #	Description/Color (1 yd. Min.)	Price
FEV705RE	“Zimba” (Zebra) Reds on Sheer Black 45” wide	\$20.00 yd.
FEV706MF	Multicolored Floral on Sheer Black 57” wide	\$22.00 yd.

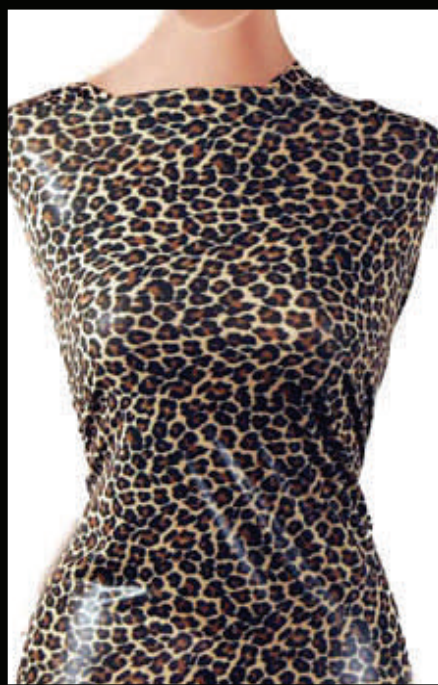
Discount Price-20% Off of 10 yards of a design.
Velvet “Burn-Out” Lycra Sample Set-\$2.00



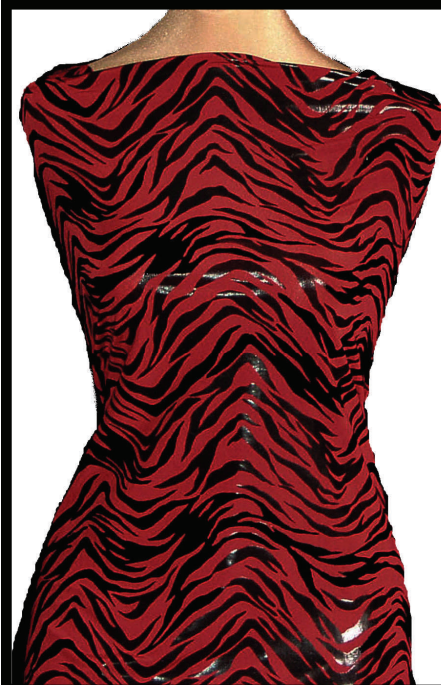
EXOTIC LYCRAS “Liquid Light”, “Liquid Metallic”, Patents, Etc.



#FE263FS- “Snake” - \$14.00yd.
Fuschia, Black & Light Grey—43” wide
(Clear patent finish on surface of print)



#FE246LCD-“Leopard”\$14.00 yd
Black, Brown & Beige—45” wide
(Clear dots on surface of print)



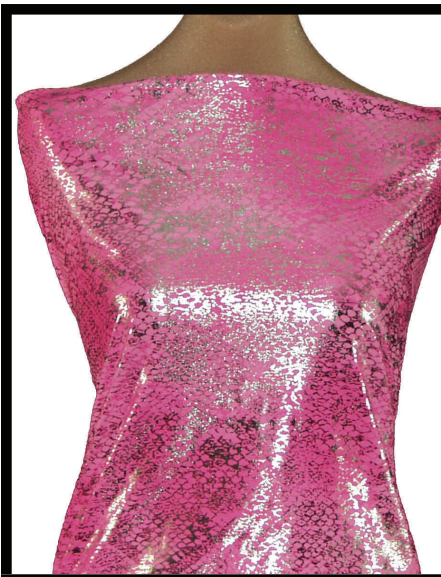
#FE245-“Zebra” \$16.00 yd
Black Cire on Red or
Black Cire on Black 43” wide



#FE259CR- “Cosmic Rays”
Multicolor 57”- \$18.00 yd.
With splashes of Holograms



#FE215 “Liquid Metallic” \$16.00 yd
Gold, Black, Copper, Fuschia, Red,
Royal Blue & Turquoise



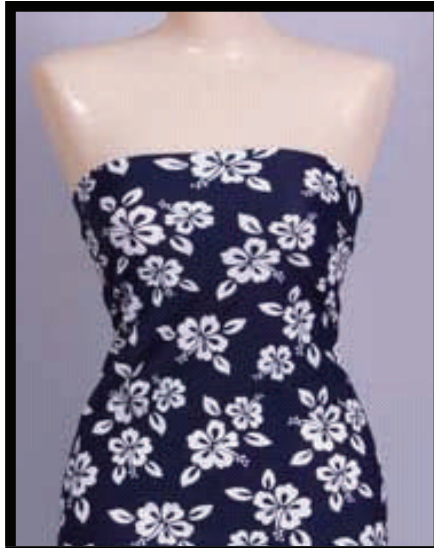
#FE243 “Snake” \$16.00 yd.
Pink w/Silver Highlights
Royal Blue w/Silver Highlights

The Exotic Lycras on this page are just a small selection of our stock.
EXOTIC LYCRA SAMPLE SET is available for \$2.00 .

NYLON & POLY LYCRAS



#FLP519RWB \$12.00 yd.
Red, White & Blue Floral 58" wide



#FLP421NWH \$12.00 yd.
Navy with White Hibiscus 58" wide



#1414 \$12.00 yd.
Pink & Purple Geometric Flower



#1209 \$12.00 yd.
Navy & White Leaves 58" wide



#1206 \$12.00 yd.
"Balls" Aqua/Green/Black 58"



#1204 \$12.00 yd.
White Floral on Turquoise 58" wide

Go to our website catalog
www.FabricDepotCo.com
for hundreds of other lycra
prints to choose from.

Individual Samples of
Lycra Prints are available
cut and labeled
for \$1.00 each.

COTTON LYCRA 57" wide \$13.00 yd.

Nothing beats the cool comfort of cotton lingerie or active wear. 4 way stretch (Minimum 1 yd.)

Style #	Color	Style #	Color	Style #	Color
FL600YKI	Yellow Kiwi	FL600HEG	Heather Grey	FL600COR	Coral
FL600TE	Teal	FL600LB	Light Blue II	FL600KE	Kelly Green
FL600TU	Turquoise	FL600DHG	Dk.Heather Grey	FL600COP	Copper
FL600GO	Gold	FL600RR	Real Red	FL600NA	Navy
FL600MAI	Maise	FL600LA	Lavender	FL600BLI	Blue Ice
FL600DNA	Dark Navy	FL600LELI	LemonLime	FL600CG	Charcoal Grey
FL600WH	White	FL600AQB	Aqua Blue	FL600MAH	Maroon Heather
FL600BK	Black	FL600PIP	Pink Passion	FL600MAR II	Maroon II
FL600RB II	Royal Blue II	FL600PC	Pink Candy	FL600DEN	Denim Blue
		FL600DUB	Dusty Blue	FL600HG	HunterGreenII

Discount Price-10 yards or more of a color is \$10.40 yd.

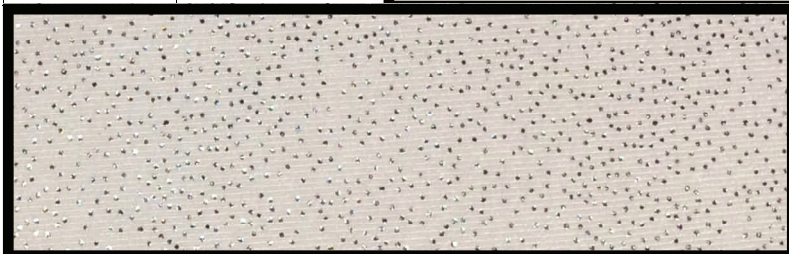
Solid Color Cotton Lycra Sample Set \$2.00



"Sparkle Mist" Lycra 57" wide \$14.00 yd.

Polyester with the soft "feel of cotton". Tiny Silver metallic dots misted on the surface. Use for camis, panties, sleep wear or activewear. (4 way)

Style #	Color (Min. 1 yard)	Discount Price-10 yards or more \$11.20 per yard.
FE281SMW	White	



"Featherweight" COTTON Lycra

50"/60" wide \$11.00 yd.

A very light weight lingerie fabric for lining Dance or Activewear costumes. 4 way stretch

Style #	Color (Min. 1 yard)
FL650WH	White
FL650BK	Black

Discount Price-10 yards or more of a color is \$8.80 yd

"Featherweight" Solid Color Cotton Lycra Sample Set \$1.00

"HEAVY Compression" Lycra

4 way stretch 58"/60" wide \$20.00 yd.

88% Nylon 12% Spandex

Has the look and feel of cotton. Excellent for post surgical compression sleeves, leggings, yoga pants, activewear, bras and other foundation garments.

Style #	Color (Min. 1 yard)
FL500NU	Nude
FL500WH	White
FL500BK	Black

Discount Price-10 yards or more of a color is \$16.00 yd

"HEAVY Compression" Lycra Sample Set \$2.00



Check out our Stretch and Rashelle Lace Trims starting on page 20

“SATINIQUE” or Matinique POWER Lycra Lining \$14.50 yd

Satiny finish or matte finish with the CONTROL of heavy weight powernet for lining swimwear or dance costumes. Ideal for foundation garments or compression garments.

Style #	Color	Width	Type (Minimum 1 yd.)
FL980NU	Nude	57”	Satinique — Satiny Finish
FL980WH	White	57”	Satinique — Satiny Finish
FL980BK	Black	57”	Satinique — Satiny Finish
FL981NU	Nude	57”	Matinique — Matte Finish

Discount Price-10 yards or more of a color is \$11.60 yd

LININGS etc.

Swimsuit & Costume Knit Lining

57/60” wide \$8.00 yd.
This 100% Nylon lining is used by many commercial swimsuit and costume manufacturers. 4 way (No Lycra content)

Style #	Color (1 yd. min.)
FL800NU	Nude
FL800DN	Dark Nude
FL800WH	White
FL800BK	Black

Discount Price-10 yards or more of a color is \$6.40 yd

“Featherweight”

Nylon Lycra Lining

58” / 78” wide \$14.00 yd.

The lightest of lycras (3.5 oz to 4.5oz.) Ideal for linings or “Modesty Undergarments” for Ballerinas, Skaters & Dancers.

Style #	Color	Price
FL991NU	Nude	\$14.00 yd.
FL991WH	White	\$14.00 yd.
FL992NU	Nude	\$14.00 yd.

Discount Price-10 yards or more of a color is \$11.20 per yard.

Matinique & Satinique Sample Sets are \$2.00

Swimsuit Spandex Lining

57/60” wide \$7.00 yd.

This lining has a soft finish and has 2-way stretch. It can be used for costume or swimsuit lining or making lingerie such as camis & panties.

Style #	Color (1 yd. min.)
FL900NU	Nude

Discount Price-10 yards or more is \$5.60

STABLIZED Tricot

54/55” wide \$8.00 yd.

Stabilized nylon tricot fabric can be used to re-inforce bra cups & center fronts, side panels in bustiers and waist cinchers and to add support to tummy control panels in foundation garments.

Style #	Color/Type- 1 yard min.
FT151WH	1-Way Stretch Sheer White
FT151NU	1-Way Stretch Sheer Nude
FT150BK	No Stretch Sheer Black
FT150NU	No Stretch Sheer Nude
FT200WH	Opaque White

Discount Price-10 yards or more of a color is \$6.40 a yard .



Matching stretch lace
“Renaë” #LA368
is on page 14

“Rubenesque”

Control Lycra \$14.00 yd.

Stretch Lace bonded to 4 way stretch lycra. Use for bras and foundation garments where a lot of control is needed. 58” wide

Style #	Color (1 yd. min.)
FL960NU	Nude

Discount Price-10 yards is \$11.20 yd

Swimsuit Lycra Lining

39/45” wide \$9.00 yd.

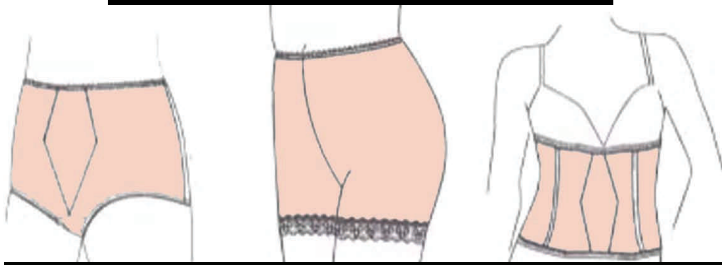
A step above the regular spandex swimwear lining. It is a firmer lining with a 4 way stretch.

Style #	Color (1 yd. min.)
FL930NU II	Nude II
FL930WH	White
FL930BK	Black

Discount Price-10 yards or more of a color is \$7.20 yd

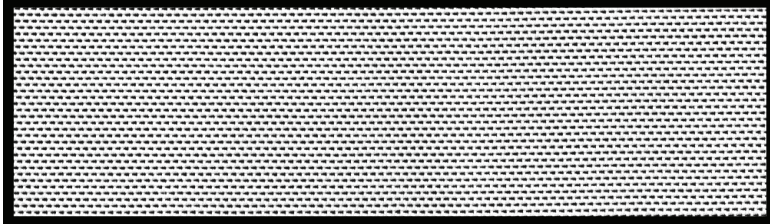
Lining Sample Sets & Stabilized Tricot Sample Sets are \$2.00

SPECIALITY FABRICS



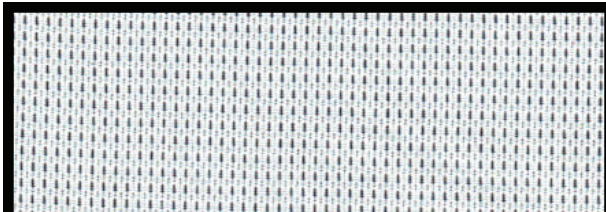
Medium Wt. Powernet

For control garments, girdles, long-line and regular bras and swimsuit lining. (1 yard Min.)



Style #	Color	Style #	Color
FP501WH	White (54/60") \$15.00 yd	FP500TOF	Toffee (40") \$12.00 yd.
FP501NU(New)	Nude (New)(60") \$15.00 yd	FP500NU II	Nude II (40") \$12.00 yd
FP501NU	Nude II (54/60") \$15.00 yd	FP500WH	White (40") \$12.00yd
FP501NU III	Nude III(54/60") \$15.00 yd	FP500WH-	White (21") \$6.00 yd
FP500SU II	Suntan II (40") \$12.00 yd	FP500BK	Black (40") \$12.00yd

Discount Price-20% Off of 10 yards or more of a color & width.



"SUPERNET"

VERY FIRM 1-way stretch netting for SUPER control under-garments such as girdles, bustiers and back braces.

Style #	Color	Width	Price (1 yard. Min.)
FP450BK	Black	40/47"	\$14.00 yd.
FP450WH	White	40/47"	\$14.00 yd

Discount Price-10 yards or more of a color is \$11.20 yd

Medium & Heavy Weight
Powernet Sample Set-\$2.00

Heavy Weight Powernet

For foundation garments needing more control.

Style #	Color	Width (Min. 1 yd)	Price
FP525WH	White	40/45"	\$14.00 yd.
FP525WH-	White	26"	\$10.00 yd.
FP525BK	Black	40/45"	\$14.00 yd.
FP525SU	Suntan II	40/45"	\$14.00 yd.
FP525NU	Nude	40/45"	\$14.00 yd.
FP525DN	Dark Nude	65"	\$16.00 yd.
FP525TOF	Toffee	40/45"	\$14.00 yd.

Discount Price-20% Off of 10 yards or more of a color.



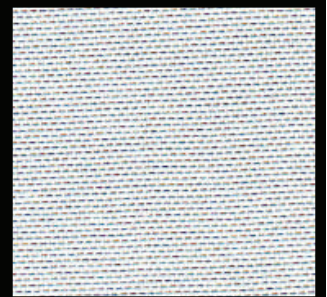
Fancy Designer Powernet in medium weight for bras, bustiers and foundation garments.

Style #	Color (1 yd. Min.)	Width	Price
FP415SW	"Summer"- White	43"	\$14.00 yd.
FP415SN	"Summer"- Nude	43"	\$14.00 yd.

Discount Price-10 yards or more of a color is \$9.60 yd.

"Caress Net"

This heavy weight powernet has a "soft hand" that caresses your body, making it ideal for compression sleeves & leggings and for foundation garments.



Style #	Color (1 yd. min.)	Width	Price
FP551WH	White	57-58"	\$15.00 yd.
FP551BK	Black	57-58"	\$15.00 yd.

Discount Price-\$12.00 per yard for 10 yards or more of a color.